



Skill and qualifications recognition



8-12 July 2024

NZQA, Wellington, New Zealand

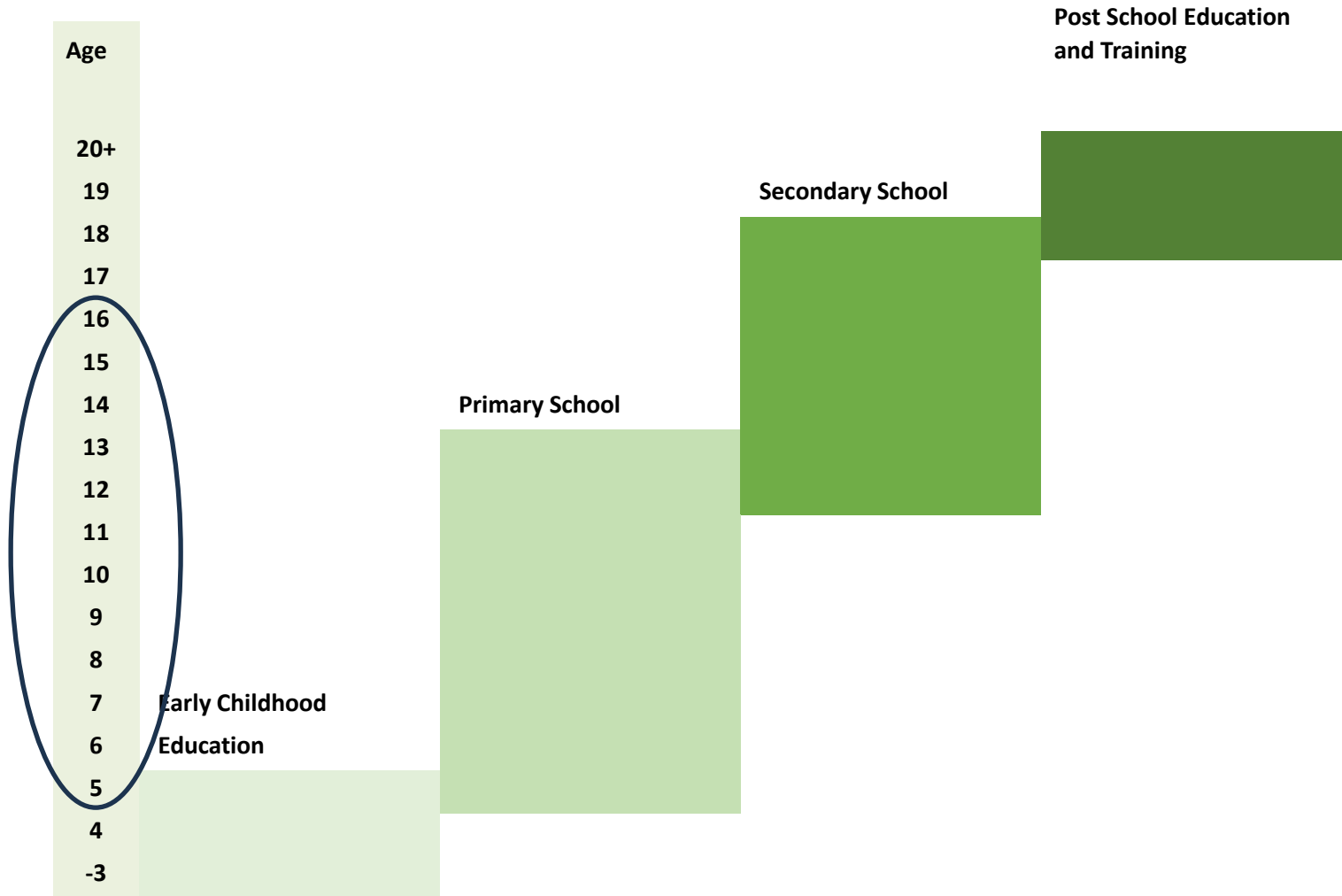


Trends and Statistics

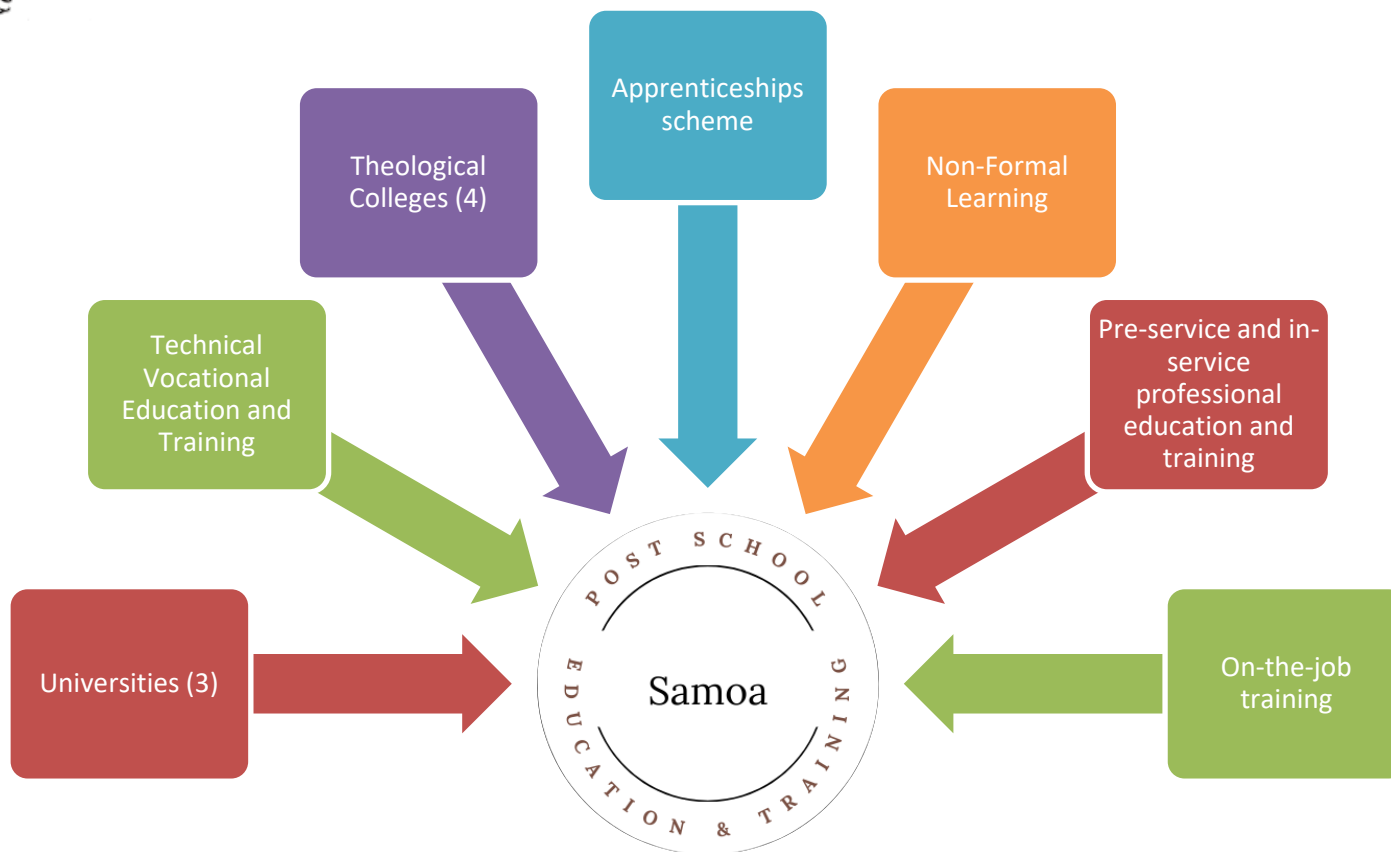
- 205,557 people in Samoa (62 per cent 15+)
- 100,704 female; 104,853 male
- 82% of working age population in rural areas
- Agriculture, Forestry, and fisheries – 30 per cent of employed labour force in Samoa
- NEET is 30 per cent
- PSET enrolment – 6,678
- PSET graduates – 2,354
- PSET gender – 58% female, 42% male



Education and Training



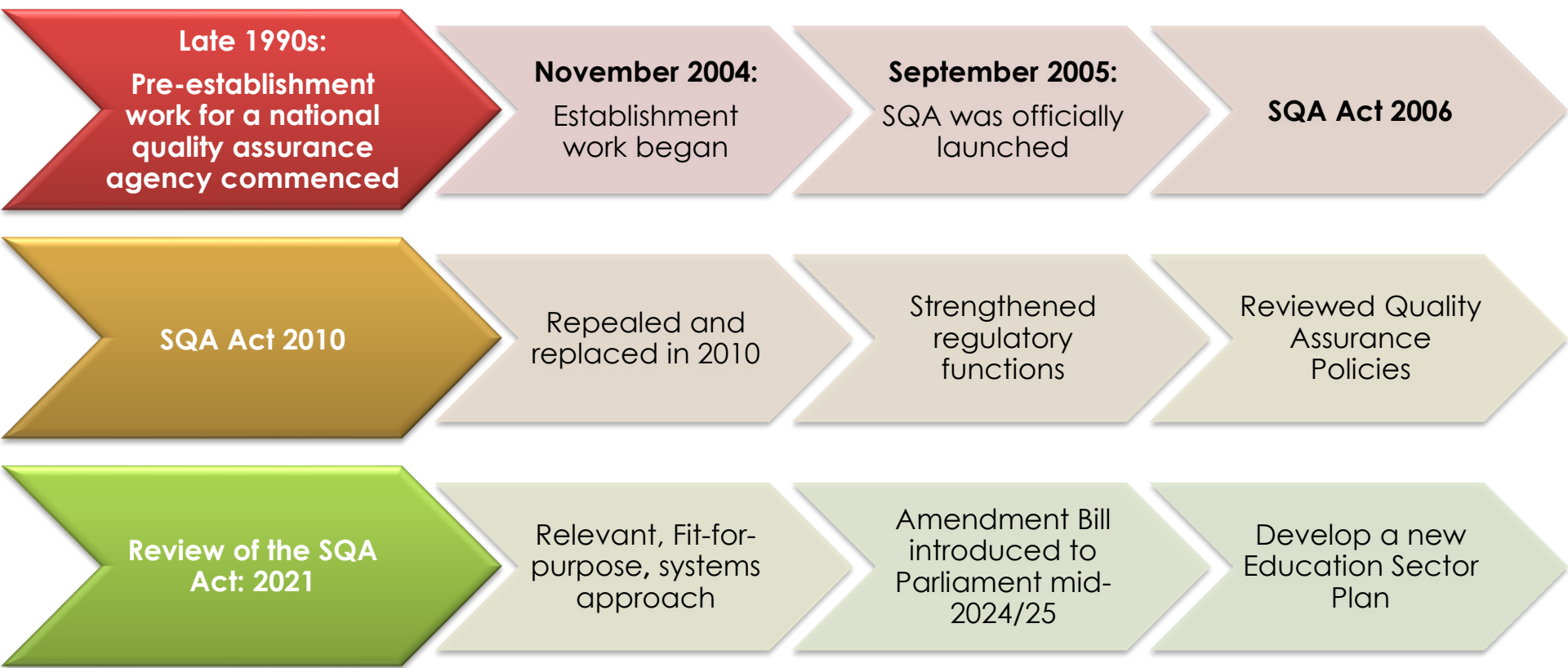
What is PSET?



All forms of education and training activities that occur **outside the compulsory school system** using **any mode of delivery**.

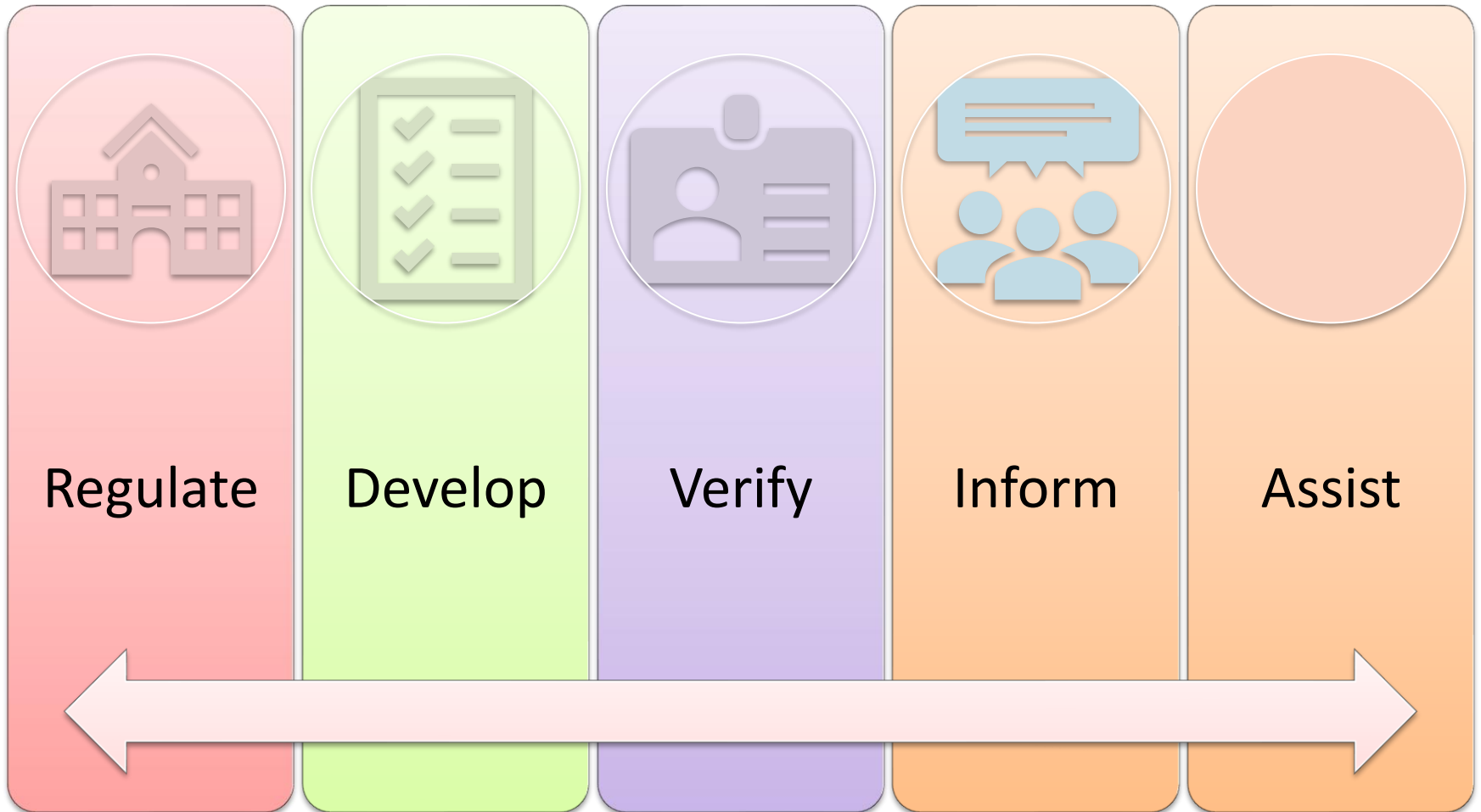


Quality Assurance of PSET in Samoa



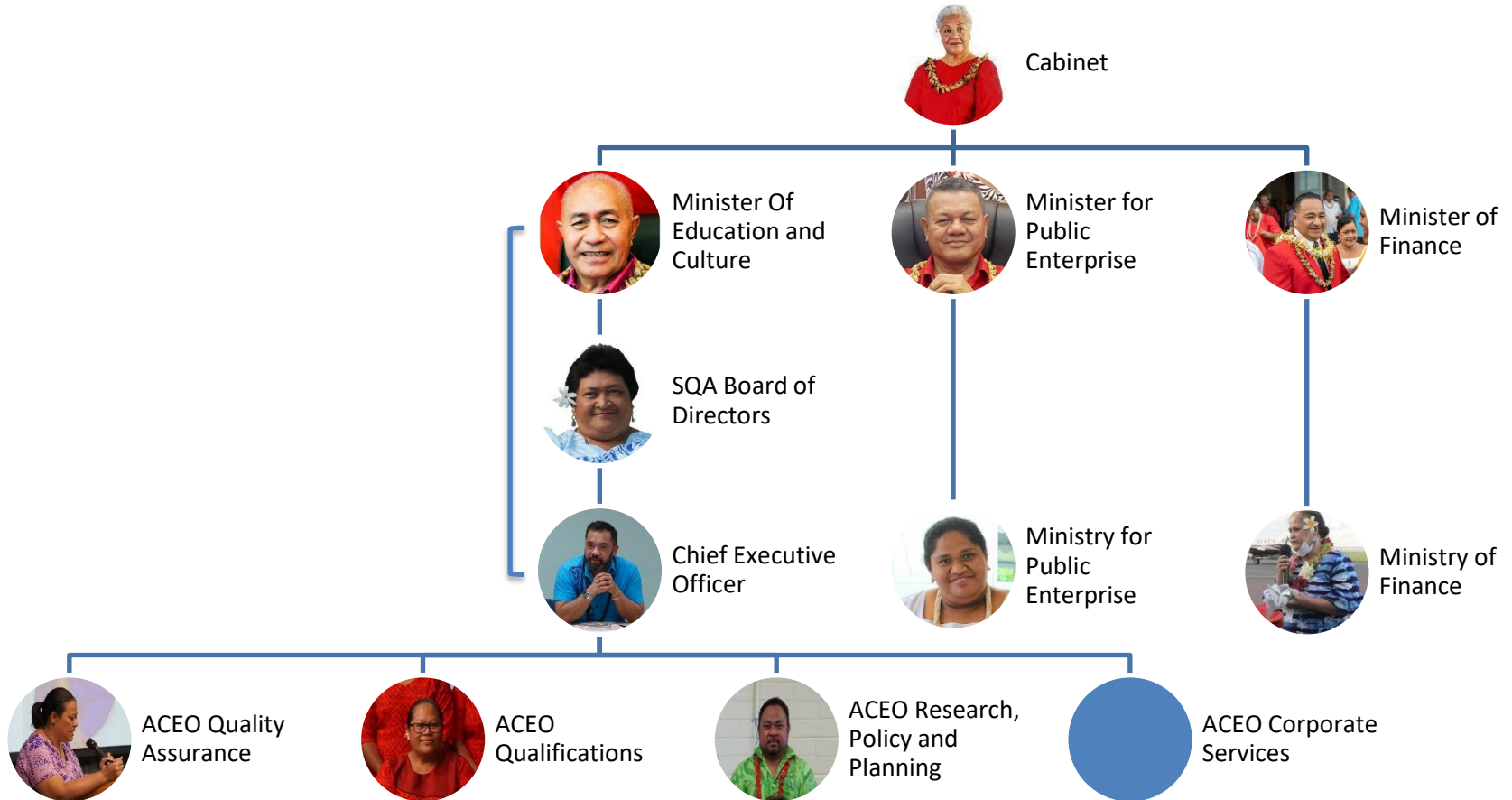


SQA Functions



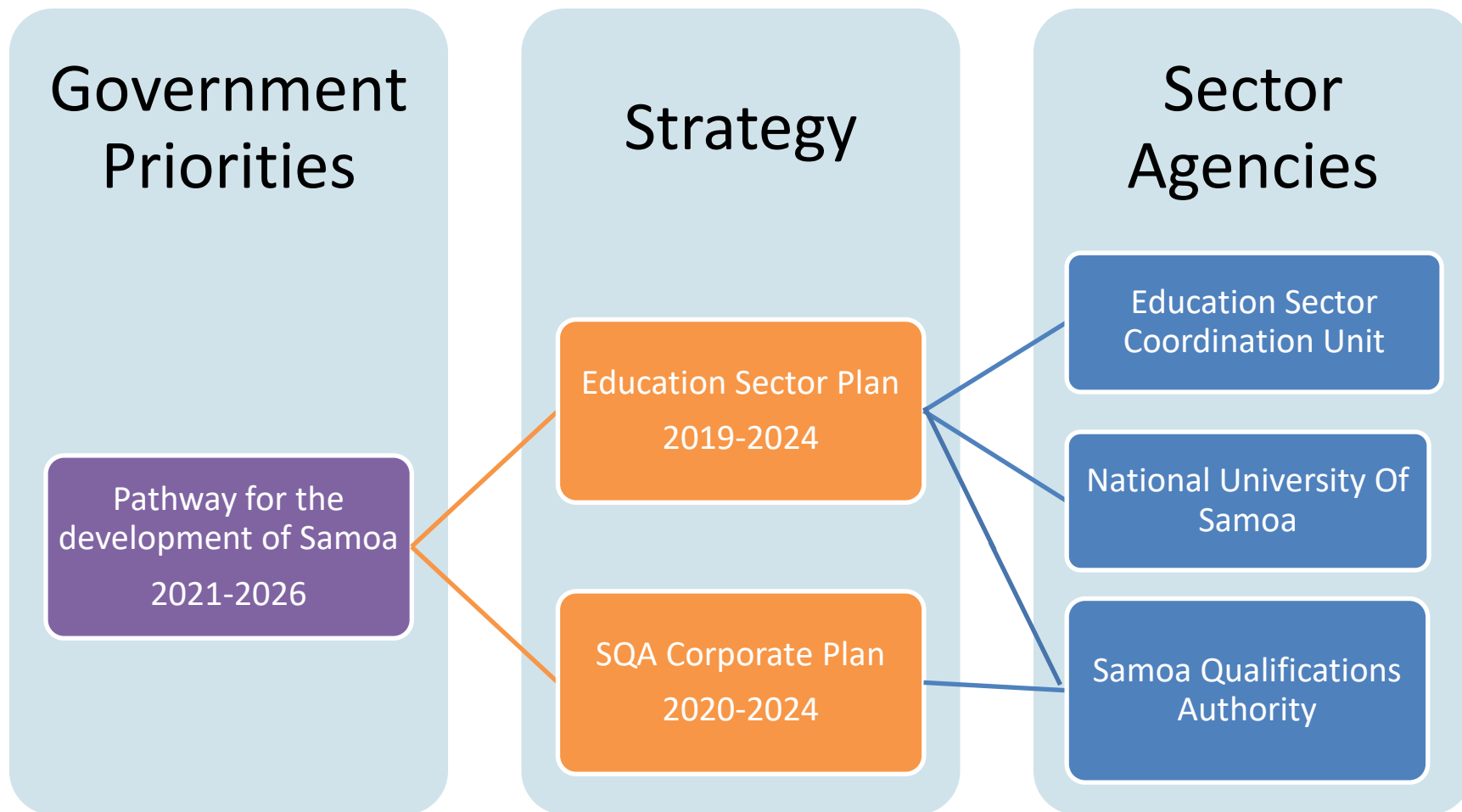


Governance of PSET





Linking PSET to Priorities





Pathway for the Development of Samoa

- Key Strategic Outcome 1:
Improved Social Development
 - Key Priority 3: Quality Education
 - Key Priority 4: People
Empowerment
 - Key Priority 5: Skilled Workforce



Core Values





Samoa Qualifications Framework

- Structure for establishing national equivalence and comparability of regulated PSET and other learning
- Supports regional and international comparability of qualifications awarded in Samoa
- Facilitates the understanding of the knowledge, skills, and competencies graduates have achieved through clear level descriptors



Samoa Qualifications Framework

- Facilitates the matching of skills demanded by industry and the supply of skilled workers
- Enables the development of a register of quality assured PSET qualifications, to enhance opportunities for labour and education mobility
- Support the development of lifelong learning through flexible learning pathways, including learning pathways from non-formal to formal-learning



Samoa Qualifications Framework

- Facilitates the recognition of prior learning, previously acquired skills and current competencies
- Supports PSET providers to develop new qualifications in response to changed needs.



The Samoa Qualifications Framework

SQA defines the characteristics qualifications

LEVEL	QUALIFICATION
X	DOCTORATE
IX	MASTERS
VIII	POSTGRADUATE DIPLOMAS, POSTGRADUATE CERTIFICATES, BACHELOR WITH HONOURS
VII	BACHELORS, GRADUATE DIPLOMAS
VI	DIPLOMAS
V	
IV	CERTIFICATES
III	
II	
I	

International recognition

Qualifications Register

Quality Assurance

- PSET Provider Registration
- Programme Accreditation
 - Qualification Registration on SQF
- Quality Audit

Learners are certified when they **meet the outcome standards** of the qualification either through a programme delivered at an accredited provider or through a recognised process that recognises prior learning



Qualifications System

Programme and Qualification Development

- Provider developed programme and qualifications
- National Competency Standards and Samoa Qualifications

Quality Assurance

- Provider registration
- Programme Accreditation
- Quality Audit

- National External Moderation
- Workplace Assessment



Qualifications Recognition

- Access to further education and/or employment

Principals

- Quality – Quality assurance status
- Level of a qualification – within the national education system
- Workload – volume of study
- Profile – type of qualification
- Learning outcomes – what a student knows, understands and be able to demonstrate.



Faafetai lava

Tupai Peter Peilua
Chief Executive Officer
Samoa Qualifications Authority
Peter.Peilua@sqa.gov.ws