

REGIONAL WORKSHOP ON TRADE IN SERVICES

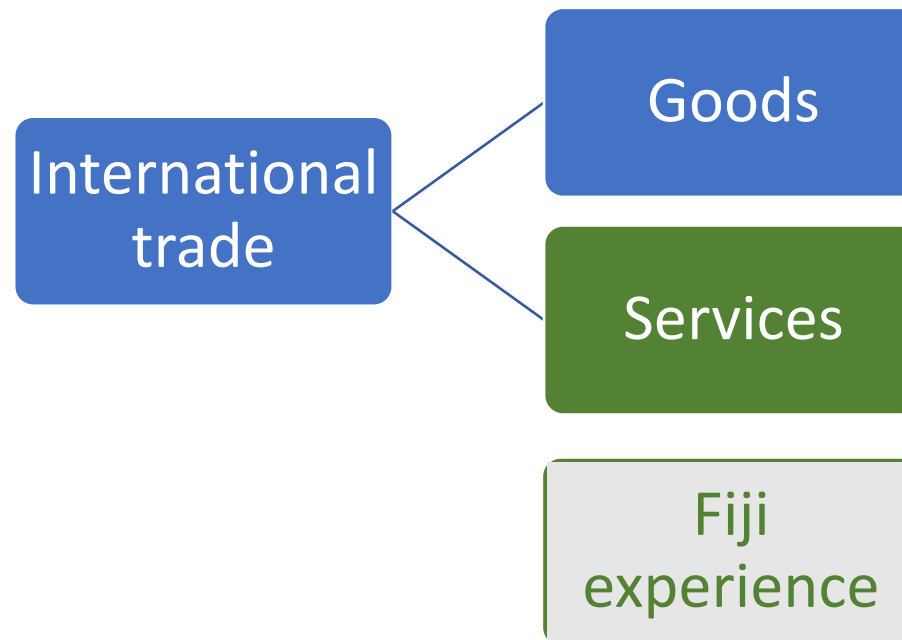
8 – 11 May 2023
PPIU Office, Apia, Samoa

Application of trade in services data

Presentation by Nilima Lal
Economic Statistics Adviser, Pacific Community
Email: NilimaL@spc.int

Acknowledgement and introduction

PACER Plus Implementation Unit



Trade in services data sources for the Pacific

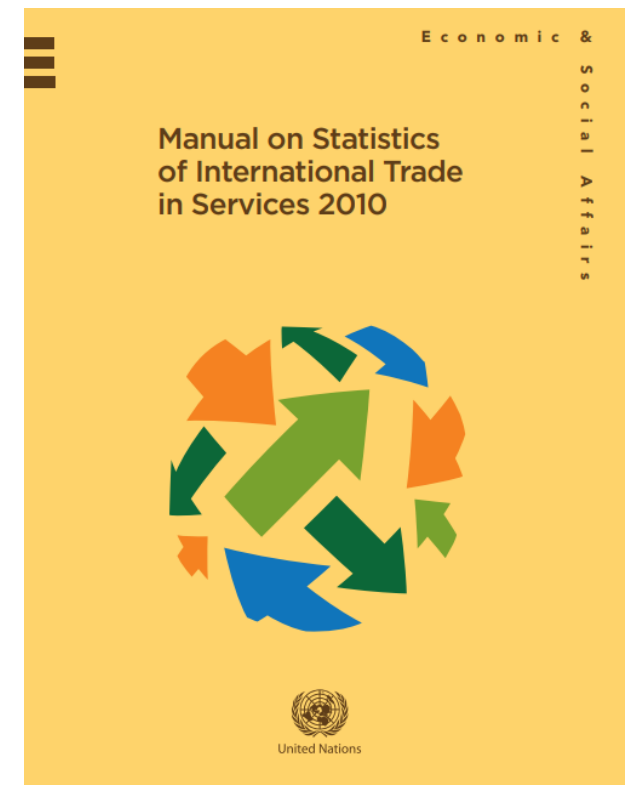
Application of trade in services data, by sector for policy formulation and negotiations

Overview of Trade in services

Measures the value of imports (Dr) and exports (Cr) of services between residents and non-residents of a country. Wider scope: covers transactions by foreign affiliates' e.g. a foreign bank subsidiary in a host economy to supply banking services.

Manual on Statistics of International Trade in Services [current 2010 but global consultations have started for its revision]. This framework has four major components

- BPM6 concepts and classification related to international trade in services
- BPM6 extensions, providing more detailed information on transactions by product category and partner country
- Foreign affiliates statistics which complement BPM6
- A statistical approach to the treatment of modes of supply



Residency rule

- Example: Fiji

General government agencies like all government departments, local government, Fiji embassies and consulates located overseas.

Financial and trading establishments, which include all establishments engaged in the production of goods and services on a commercial or equivalent basis. Resident establishments include branches of foreign companies operating in Fiji.

Non-profit bodies like the charitable organizations and business organizations e.g. chambers of commerce and churches.

Resident households and individuals residing in Fiji for one year or more and whose center of interest is considered to be Fiji.

Fiji's diplomatic and consular representatives, armed forces and students studying abroad are also considered Fiji residents.

Need for International trade in services (ITSS)

National Accounts: GDP (E)

Fiji Bureau of Statistics - Key Statistics: Annual 2020
NATIONAL INCOME

2.7 Gross Domestic Product by Expenditure Approach At Current Market Prices FJD [Millions]

Years	Final Consumption Expenditure [FCE]			Gross Fixed Capital Formation	Domestic Final Demand	Changes in Inventories	Gross National Expenditure	Exports	Imports	Statistical Discrepancy	GDP - Current Market Price
	General Government	Private	Total FCE								
2014 [r]	1,833.4	5,314.0	7,147.4	1,567.8	8,715.2	133.1	8,848.3	4,797.5	5,360.7	881.9	9,167.0
2015 [r]	1,979.4	5,617.8	7,597.2	1,826.2	9,423.4	240.2	9,663.6	4,796.8	5,142.1	503.8	9,822.1
2016 [r]	1,956.1	6,340.5	8,296.6	1,924.7	10,221.2	173.1	10,394.3	4,817.4	5,218.1	333.7	10,327.3
2017 [r]	2,133.4	6,725.7	8,859.1	2,010.6	10,869.7	230.8	11,100.5	5,091.6	5,643.8	516.7	11,065.0
2018 [r]	2,375.8	7,049.0	9,424.8	1,998.5	11,423.3	239.5	11,662.8	5,563.0	6,464.5	889.2	11,650.5
2019 [r]	2,511.7	7,191.2	9,702.9	1,597.6	11,300.5	148.3	11,448.8	5,700.0	6,933.8	1,627.6	11,842.6
2020 [p]	2,403.0	6,185.6	8,588.6	1,169.7	9,758.3	0.0	9,758.3	2,672.1	4,293.4	1,570.3	9,707.3

Need cont..

Balance of Payments: Goods and Services Accounts

Fiji Bureau of Statistics - Key Statistics: Annual 2022

BALANCE OF PAYMENTS

6.1 BALANCE OF PAYMENTS FJD [Millions]

	YEARLY					QUARTERLY							
	2018	2019	2020	2021 [p]	2022 [p]	Mar	2021 [p]			2022 [p]			
							Jun	Sep	Dec	Mar [r]	Jun [r]	Sep [r]	Dec
Fiji's Current Account Summary													
GOODS AND SERVICES													
GOODS													
Credits	2,097.2	2,218.0	1,775.4	1,839.6	2,318.0	399.4	441.9	468.1	530.2	387.9	505.0	757.0	668.1
Debits	4,936.6	5,222.0	3,197.2	3,799.9	5,917.5	824.6	973.3	1,028.2	973.8	1,143.6	1,402.6	1,692.0	1,679.3
Balance on Trade in Goods	-2,839.4	-3,004.0	-1,421.8	-1,960.3	-3,599.5	-425.2	-531.4	-560.1	-443.6	-755.7	-897.6	-935.0	-1,011.2
SERVICES													
Credits	3,465.8	3,482.0	899.9	589.8	2,952.2	115.7	113.3	94.4	266.4	306.1	668.0	924.2	1,053.9
Debits	1,527.9	1,711.8	1,082.0	1,055.8	1,665.6	234.3	263.6	277.2	280.7	320.3	361.7	474.1	509.5
Balance on Trade in Services	1,937.9	1,770.2	-182.1	-466.0	1,286.6	-118.6	-150.3	-182.8	-14.3	-14.2	306.3	450.1	544.4
Balance on Goods and Services	-901.5	-1,233.8	-1,603.9	-2,426.3	-2,312.9	-543.8	-681.7	-742.9	-457.9	-769.9	-591.3	-484.9	-466.8

Need cont..

Components of goods and services accounts

6.2 CURRENT ACCOUNT - GOODS AND SERVICES
FJD [Millions]

	YEARLY					QUARTERLY							
	2018	2019	2020 [p]	2021 [p]	2022 [p]	2021 [p]				2022 [p]			
						Mar	Jun	Sep	Dec	Mar [r]	Jun [r]	Sep [r]	Dec
Balance on Goods and Services	-901.5	-1,233.8	-1,603.9	-2,426.3	-2,312.9	-543.8	-681.7	-742.9	-457.9	-769.9	-591.3	-484.9	-466.8
GOODS													
Balance on Trade in Goods	-2,839.4	-3,004.0	-1,421.8	-1,960.3	-3,599.5	-425.2	-531.4	-560.1	-443.6	-755.7	-897.6	-935.0	-1,011.2
<i>Credits</i>	2,097.2	2,218.0	1,775.4	1,839.6	2,318.0	399.4	441.9	468.1	530.2	387.9	505.0	757.0	668.1
General merchandise on a BOP basis	1,980.0	2,102.0	1,637.1	1,686.7	2,204.3	364.1	406.7	429.3	496.6	361.8	475.7	722.9	643.9
Net exports of goods under merchanting	3.6	7.4	4.2	10.5	12.4	2.0	3.1	3.1	2.3	2.9	3.7	5.1	0.7
Nonmonetary gold	113.6	108.6	134.1	132.4	101.3	33.3	32.1	35.7	31.3	23.2	25.6	29.0	23.5
<i>Debits</i>	4,936.6	5,222.0	3,197.2	3,799.9	5,917.5	824.6	973.3	1,028.2	973.8	1,143.6	1,402.6	1,692.0	1,679.3
General merchandise on a BOP basis	4,936.6	5,222.0	3,197.2	3,799.9	5,917.5	824.6	973.3	1,028.2	973.8	1,143.6	1,402.6	1,692.0	1,679.3
Nonmonetary gold	0.0	0.0	0.0	0.0	0.0	0.0	0.0	0.0	0.0	0.0	0.0	0.0	0.0
SERVICES													
Balance on Trade in Services	1,937.9	1,770.2	-182.1	-466.0	1,286.6	-118.6	-150.3	-182.8	-14.3	-14.2	306.3	450.1	544.4
<i>Credits</i>	3,465.8	3,482.0	899.9	589.8	2,952.2	115.7	113.3	94.4	266.4	306.1	668.0	924.2	1,053.9
Manufacturing services on physical inputs owned by others	16.4	14.1	21.1	14.9	18.9	3.1	4.1	4.2	3.5	3.9	5.0	5.0	5.0
Maintenance and repair services n.i.e.	5.9	6.4	7.7	6.2	7.2	2.1	1.3	1.5	1.3	1.0	2.2	2.5	1.5
Transport	1,040.9	1,044.4	307.9	176.8	1,067.2	31.3	30.1	30.8	84.6	122.1	235.7	310.0	399.4
Travel	2,028.6	2,080.5	333.4	72.2	1,526.1	16.0	12.2	7.1	36.9	121.3	347.3	522.2	535.3
Construction	4.4	16.5	6.1	4.9	14.2	0.7	1.1	2.3	0.8	3.3	3.8	3.5	3.6
Insurance and pension services	0.0	0.0	0.0	0.0	0.0	0.0	0.0	0.0	0.0	0.0	0.0	0.0	0.0
Financial services	10.9	10.6	5.6	4.8	5.8	1.2	1.2	1.2	1.2	1.1	1.4	1.5	1.8
Charges for the use of intellectual property	1.8	1.7	0.3	0.1	0.6	0.0	0.0	0.0	0.1	0.0	0.0	0.6	0.0
Telecommunications, computer and information services	62.2	49.9	31.8	26.1	48.3	5.6	5.0	6.4	9.1	8.3	11.2	13.5	15.3
Other business services	47.3	36.7	35.8	47.3	62.6	11.8	14.6	7.7	13.2	9.5	11.6	15.4	26.1
Personal, cultural and recreational services	0.0	0.0	0.0	0.0	0.0	0.0	0.0	0.0	0.0	0.0	0.0	0.0	0.0
Government goods and services n.i.e.	247.4	221.2	150.2	236.5	201.3	43.9	43.7	33.2	115.7	35.6	49.8	50.0	65.9
<i>Debits</i>	1,527.9	1,711.8	1,082.0	1,055.8	1,665.6	234.3	263.6	277.2	280.7	320.3	361.7	474.1	509.5
Manufacturing services on physical inputs owned by others	0.0	0.0	0.0	0.0	0.0	0.0	0.0	0.0	0.0	0.0	0.0	0.0	0.0
Maintenance and repair services n.i.e.	5.4	6.8	5.4	7.9	7.8	2.0	1.3	3.6	1.0	2.0	1.0	2.7	2.1
Transport	806.8	859.0	485.8	508.1	883.5	112.4	127.7	134.8	133.2	163.3	195.7	252.2	272.3
Travel	311.0	356.5	163.1	152.4	355.5	30.4	42.7	34.9	44.4	49.7	69.3	109.0	127.5
Construction	27.6	39.2	19.5	9.9	13.0	3.7	2.2	1.9	2.1	3.3	4.0	3.4	2.3
Insurance and pension services	104.5	115.4	91.1	91.9	111.9	19.9	22.5	25.8	23.7	27.5	23.9	32.1	28.4
Financial services	2.8	5.1	16.4	14.3	15.1	4.1	3.7	4.0	2.5	2.8	3.5	4.1	4.7
Charges for the use of intellectual property	14.0	13.7	13.1	4.7	5.6	2.1	0.8	0.4	1.4	2.7	1.0	0.9	1.0
Telecommunications, computer and information services	74.1	76.3	67.6	69.4	68.5	15.9	16.5	19.7	17.3	15.5	15.2	17.8	20.0
Other business services	141.9	201.5	185.1	172.4	181.3	37.7	40.5	45.1	49.1	47.9	43.2	45.4	44.8
Personal, cultural and recreational services	10.1	6.2	5.0	4.3	2.3	0.4	0.8	2.7	0.4	0.7	0.8	0.6	0.2
Government goods and services n.i.e.	29.7	32.1	29.9	20.5	21.1	5.7	4.9	4.3	5.6	4.9	4.1	5.9	6.2

Need cont..

Other than the internal users, there are external users –

- Students/teachers – to gauge their country's performance and economic relationship with the rest of the world
- Financial sector economists, national and international investors
- International agencies such as the IMF and UN – to monitor their member country's performance and the preparation of country reports and the compilation of global ITSS. It also allows them to assist PICs adhere to the international standards and practices
- Academic researchers – for research, econometric modelling
- Government's – for monitoring and policy formulation [foreign debt, imports, tourism inflows].

ITSS compilation in the Pacific

Which PICs compile ITSS?????

- All PICs who compile GDP (E)
 - Fiji: releases GDP uses all 3 approaches – uses SUT framework
- All PICs that compile the BOP
 - Fiji: compiles and disseminates ITSS every quarter
 - All other PICs – only do estimates using OET/ITRS data from the Bank for inclusion in the goods and services account of the current account in the BOP



Central Banks

National Statistics Offices

Classification

2010 Extended Balance of Payments Services Classification (EBOPS 2010).

Note: For the full classification refer to Annex 1 of the Trade in Services Manual 2010. What given here is specific to Fiji - mode of transport such as railway and road excluded.

		Credit	Debit
	Total Services		
1	Manufacturing services on physical input owned by others		
<i>1.1</i>	<i>Goods for processing in Fiji</i>		
2	Maintenance and repair services n.i.e.		
<i>2.1</i>	<i>Repairs of goods</i>		
3	Transport		
<i>3.1</i>	<i>Sea transport</i>		
	<i>3.1.1 Passenger</i>		
	<i>3.1.2 Freight</i>		
	<i>3.1.3 Others</i>		
<i>3.2</i>	<i>Air Transport</i>		
	<i>3.2.1 Passenger</i>		

Classification cont..

		Credit	Debit
	<i>3.2.2 Freight</i>		
	<i>3.2.3 Others</i>		
3.3	<i>Postal and courier services</i>		
4	Travel		
<i>4.1</i>	<i>Business</i>		
<i>4.2</i>	<i>Personal</i>		
	<i>4.2.1 Personal</i>		
	<i>4.2.2 Health Related</i>		
	<i>4.2.3 Education Related</i>		
<i>4.3</i>	<i>Less Vat Refunded (TVRS)</i>		
5	Construction		
6	Insurance and pension services		
7	Financial services		
<i>7.1</i>	<i>Explicitly charged and other financial services</i>		
8	Charges for the use of intellectual property n.i.e.		
<i>8.1</i>	<i>Royalties and license fees</i>		
9	Telecommunications, computer and information services		
<i>9.1</i>	<i>Telecommunications</i>		
<i>9.2</i>	<i>Computer and information services</i>		

Classification cont..

10	Other business services		
10.1	<i>Research and development services</i>		
10.2	<i>Professional, management and consulting services</i>		
	<i>10.2.1 Legal, accounting, management consulting and public relation services</i>		
	<i>10.2.2 Advertising, market research and public opinion and polling services</i>		
10.3	<i>Technical, trade-related, other business services</i>		
	<i>10.3.1 Architectural, engineering and other technical services</i>		
	<i>10.3.2 Operating leasing services</i>		
	<i>10.3.2.1 Operating leasing [rental w/o crew]</i>		
	<i>10.3.3 Trade related services</i>		
	<i>10.3.4 Others</i>		
	<i>10.3.4.1 Others</i>		
	<i>10.3.4.2 Agriculture, mining on site processing</i>		
11	Personal, cultural and recreational services		
11.1	<i>Audiovisual and related services</i>		
11.2	<i>Other personal, cultural and recreational services</i>		
12	Government goods and services n.i.e		
12.1	<i>Embassies and consulates</i>		
12.2	<i>Military units and agencies</i>		
12.3	<i>Other government goods and services</i>		

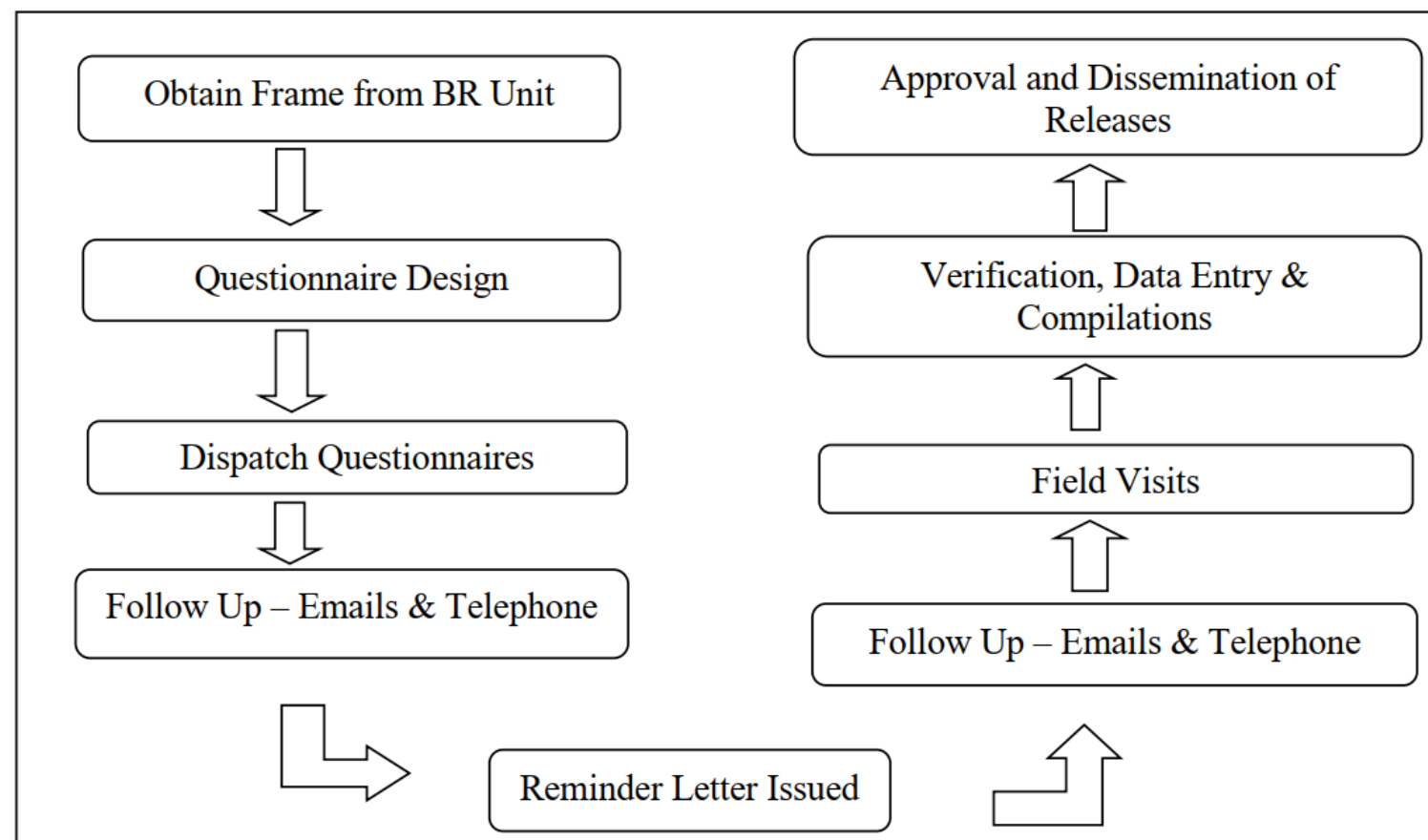
Data sources and processes

- Data needs to be collected, compiled, analysed and disseminated on a 'legal basis' e.g. Statistics Act:
 - Allows the e.g. NSO to collect the data
 - Protects the confidentiality of the information submitted
- Frequency of compilation: quarterly
- Data sources
 - Partner country
 - International Merchandise Trade Statistics
 - OET/ITRS
 - primarily not collected for statistical purposes. Therefore they differ in nature, scope and quality to data collected through surveys.

Data sources cont...

■ Surveys

- Survey processes in Fiji



Data sources cont... Fiji's BOP worksheet

5.0 ACCOUNTS AND DATA SOURCES

5.1 Services Exports Items and Sources

ITS BPM6 DETAIL WORKSHEET	
SERVICES CREDIT	SOURCE
1.A.b.1 Manufacturing services on physical inputs owned by others	
1.A.b.1.1 Goods for processing in Fiji	FRCS
1.A.b.1.2 Fish	FBoS ITS survey
1.A.b.2 Maintenance and repair services n.i.e	
1.A.b.2.1 Repairs of Goods	FRCS
1.A.b.3 Transport	
1.A.b.3.1 Sea transport	
1.A.b.3.1.1 Passenger	FBoS ITS survey
1.A.b.3.1.2 Freight	RBF
1.A.b.3.1.3 Other	
1.A.b.3.1.3.1 Ports Terminal - Repairs	
1.A.b.3.1.3.2 Ports Terminal - Stevedoring	FBoS ITS survey
1.A.b.3.1.3.3 Port Dues	
1.A.b.3.1.3.4 Salvage Earnings	RBF
1.A.b.3.2 Air transport	
1.A.b.3.2.1 Passenger	
1.A.b.3.2.1.1 Air Fares received	
1.A.b.3.2.2 Freight	
1.A.b.3.2.2.1 Freight [freight received on exports]	FBoS ITS survey
1.A.b.3.2.3 Other	
1.A.b.3.2.3.1 Airport Charges	
1.A.b.3.2.3.2 Carriage of mail on behalf of foreign post/authority	
1.A.b.3.4 Postal and courier services	
1.A.b.4 Travel	
1.A.b.4.1 Business	
1.A.b.4.2 Personal	FBoS Fiji's Earnings from Tourism Release
1.A.b.4.2.1 Personal Travel	
1.A.b.4.2.2 Health related	FBoS ITS survey
1.A.b.4.2.3 Education related	RBF
1.A.b.4.3 Less Vat refunded	FBoS Fiji's Earnings from Tourism Release [Originally sourced from FRCS]
1.A.b.5 Construction	
1.A.b.5.1 Construction Abroad	
1.A.b.6 Insurance and pension services	
1.A.b.6.1 Direct insurance	FBoS ITS survey
1.A.b.6.2 Reinsurance	
1.A.b.6.3 Auxiliary insurance services	
1.A.b.6.4 Pension and standardized guarantee services	
1.A.b.7 Financial services	

1.A.b.7.1 Explicitly charged and other financial services	
1.A.b.7.2 Financial intermediation services indirectly measured	
1.A.b.8 Charges for the use of intellectual property n.i.e.	
1.A.b.8.1 Royalties and License fees	
1.A.b.9 Telecommunications, computer and information services	
1.A.b.9.1 Telecommunications	
1.A.b.9.2 Computer and information services	
1.A.b.10 Other business services	
1.A.b.10.1 Research and development services	
1.A.b.10.2 Professional and management consulting services	FBoS ITS survey
1.A.b.10.2.1 Legal, Accounting & Management, etc.	
1.A.b.10.2.2 Advertising, market research	
1.A.b.10.3 Technical, trade-related and other business services	
1.A.b.10.3.1 Architectural, engineering etc.	
1.A.b.10.3.2 Operation leasing	
Operation leasing (rental w/o crew)	
1.A.b.10.3.3 Trade related services	
1.A.b.10.3.4 Others	
1.A.b.10.3.4.1 Others	
1.A.b.10.3.4.2 Agriculture, mining, on site processing	RBF
1.A.b.11 Personal, cultural and recreational services	
1.A.b.11.1 Audiovisual and related services	
1.A.b.11.2 Other personal, cultural and recreational services	FBoS ITS survey
1.A.b.12 Government goods and services n.i.e	
1.A.b.12.1a Peacekeeping force revenue	
1.A.b.12.1b Peacekeeping force	MoE
1.A.b.12.2 Embassy Expenditure	
1.A.b.12.3 International Agencies	RBF

5.2 Services Imports Items and Sources

SERVICES DEBITS	SOURCE
1.A.b.1 Manufacturing services on physical inputs owned by others	
1.A.b.1.1 Goods for processing in Fiji -- Goods received	
1.A.b.1.2 Goods for processing Abroad -- Goods Returned	
1.A.b.2 Maintenance and repair services n.i.e.	
1.A.b.2.1 Repairs of Goods	FRCS
1.A.b.2.2 Repairs on domestic airline	RBF
1.A.b.3 Transport	
1.A.b.3.1 Sea transport	
1.A.b.3.1.1 Passenger	
1.A.b.3.1.2 Freight	IMTS Imports data - 84% of total freight
1.A.b.3.1.3 Other	
1.A.b.3.2 Air transport	
1.A.b.3.2.1 Passenger	

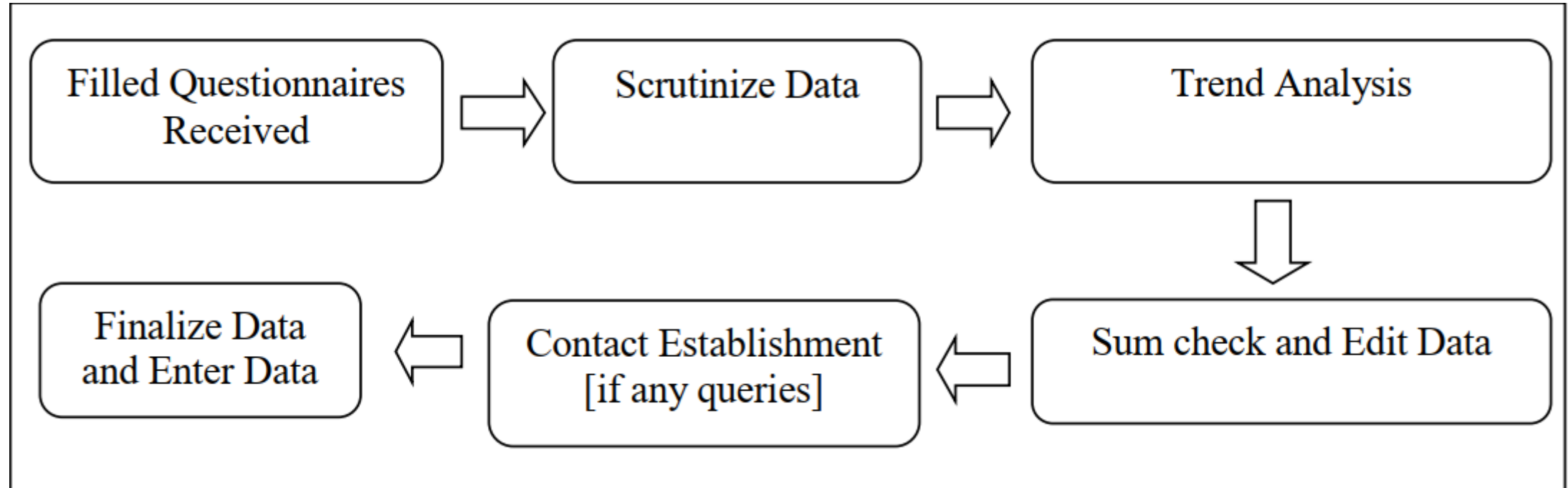
Data sources cont... Fiji's BOP worksheet

1.A.b.3.2.1.1 Foreign Airlines	FBoS ITS survey
1.A.b.3.2.1.2 Time charters	
1.A.b.3.2.2 Freight	
1.A.b.3.2.2.1 Freight	IMTS Imports data - 16% of total freight
1.A.b.3.2.2.2 Freight [freight paid on imports]	FBoS ITS survey
1.A.b.3.2.3 Other	
1.A.b.3.2.3.1 Airport charges paid abroad	FBoS ITS survey
1.A.b.3.2.3.2 Air Resident Transport Operators services abroad & commission on ticket	
1.A.b.3.2.3.3 Air Resident Transport Operators engineering/maintenance expenses & provisions	
1.A.b.3.4 Postal and courier services	
1.A.b.4 Travel	
1.A.b.4.1 Business	RBF
1.A.b.4.2 Personal	
1.A.b.4.2.1 Personal Travel	
1.A.b.4.2.2 Health related	
1.A.b.4.2.3 Education related	
1.A.b.5 Construction	
1.A.b.5.1 Construction in the compiling economy	FBoS ITS survey
1.A.b.6 Insurance and pension services	45% of Ins. Premium
1.A.b.6.1 Direct insurance	
1.A.b.6.2 Reinsurance	
1.A.b.6.3 Auxiliary insurance services	
1.A.b.6.4 Pension and standardized guarantee services	
Insurance Premiums [Payments abroad]	
Insurance Premiums paid to NR [Life & Non-Life]	
Reinsurance payments to Non Residents	RBF
Freight insurance paid on goods	IMTS - 2% of Total Imports
1.A.b.7 Financial services	
1.A.b.7.1 Explicitly charged and other financial services	
1.A.b.7.2 Financial intermediation services indirectly measured	
1.A.b.8 Charges for the use of intellectual property n.i.e	
1.A.b.8.1 Royalties and license fee	
1.A.b.9 Telecommunications, computer and information services	
1.A.b.9.1 Telecommunications	
1.A.b.9.2 Computer and information services	
1.A.b.9.3 Information services	FBoS ITS survey
1.A.b.10 Other business services	
1.A.b.10.1 Research and development services	
1.A.b.10.2 Professional and management consulting services	
1.A.b.10.2.1 Legal, Accounting & Management, etc.	
1.A.b.10.2.2 Advertising, market research	
1.A.b.10.3 Technical, trade-related and other business services	
1.A.b.10.3.1 Architectural, engineering, etc.	
1.A.b.10.3.2 Operating leasing	FBoS ITS survey

Operation leasing [rental w/o crew]	
1.A.b.10.3.3 Trade related services	
1.A.b.10.3.4 Others	
1.A.b.10.3.4.1 Others	
1.A.b.10.3.4.2 Agriculture, mining, on site processing	RBF
1.A.b.11 Personal, cultural, and recreational services	
1.A.b.11.1 Audiovisual and related services	FBoS ITS survey
1.A.b.11.2 Other personal, cultural, and recreational services	
1.A.b.12 Government goods and services n.i.e	
1.A.b.12.1 Peacekeeping force	MoE

Data sources cont...

- Data validation process in Fiji



Data for non-responding establishment are not rated-up since not all of them engage in regular export and import of services every quarter.

Admin data incorporated during Finalise data and enter data stage

Modes of Supply

Four main modes through which services are traded internationally:

Mode 1: Cross boarder supply

Mode 2: Consumption abroad

Mode 3: Commercial presence

Mode 4: Presence of natural persons

Valuation

Market price

Market price refers to the value at which services are or could be exchanged for cash.

In cases where the market price of the services is mispriced, not known or not available, a price is be imputed based on the similar known transactions.

Time of recording

Accrual basis

The provision of services should be recorded on an accrual basis in each accounting period, that is, it should be recorded when the service is rendered and not when the payment is made.

Services such as transport or hotel services are provided within a distinct period in which case there is no problem in determining the time of recording.

Data dissemination

Follow dissemination strategy

Exports

INTERNATIONAL MERCHANDISE TRADE

7.11 INTERNATIONAL TRADE IN SERVICES - EXPORT OF SERVICES FJD [Millions]

Services	1 Manufacturing services on physical inputs owned by others ^[a]	2 Maintenance and repair services n.i.e. ^[b]	3 Transportation services	3.1 Sea transport				3.2 Air transport				3.3 Postal and courier services	4 Travel services	4.1 Business / Conference	4.2 Personal				4.3 Less Vat Refunded (TVRS) ^[c]	
				3.1.1 Passenger	3.1.2 Freight	3.1.3 Other	Total	3.2.1 Passenger	3.2.2 Freight	3.2.3 Other	Total				4.2.1 Personal	4.2.2 Health related	4.2.3 Education related	Total		
Yearly																				
2010	18.2	0.0	472.4	0.0	16.3	27.1	43.4	363.2	28.5	35.7	427.4	1.6	1,215.9	71.9	1,122.5	0.0	23.2	1,145.7	1.7	
2011	18.9	8.3	518.7	0.0	14.5	26.2	40.7	414.2	22.9	39.1	476.2	1.8	1,296.0	77.7	1,208.8	0.0	12.8	1,221.6	3.3	
2012	18.8	8.5	557.4	0.0	8.0	27.1	35.1	464.1	14.0	41.2	519.3	3.0	1,305.8	65.0	1,235.0	0.0	9.0	1,244.0	3.2	
2013	24.5	8.2	573.6	0.0	18.1	29.4	47.5	459.3	16.9	41.7	517.9	8.2	1,323.2	73.6	1,244.6	0.0	9.0	1,253.6	4.0	
2014	23.3	12.1	638.5	0.0	13.0	25.6	38.6	531.3	15.9	43.0	590.2	9.7	1,525.9	87.7	1,420.2	0.0	21.9	1,442.1	3.9	
2015	23.9	14.8	700.3	0.0	20.4	12.1	32.5	581.8	17.1	65.4	664.3	3.5	1,718.6	95.9	1,581.8	1.8	42.9	1,626.5	3.8	
2016	16.2	8.7	708.3	0.0	15.5	27.9	43.4	566.3	18.0	77.9	662.2	2.7	1,833.5	136.5	1,677.9	0.7	20.7	1,699.3	2.3	
2017 [p]	15.7	11.7	776.3	0.0	15.2	25.3	40.5	622.2	21.4	90.6	734.2	1.6	1,942.5	134.3	1,779.6	0.2	30.2	1,810.0	1.8	
2018 [p]	16.4	6.9	1,040.9	0.0	16.3	56.7	73.0	838.1	20.0	106.7	964.8	3.1	2,028.6	130.5	1,868.5	0.6	30.4	1,899.5	1.4	
2019 [p]	14.0	12.0	1,044.4	0.0	22.3	51.7	74.0	828.4	23.6	106.2	958.2	12.2	2,080.5	133.3	1,926.9	0.9	20.6	1,948.4	1.2	
2020 [p][r]	21.1	7.7	310.2	0.0	14.9	54.0	68.9	187.3	19.2	29.4	235.9	5.4	333.3	17.2	296.3	0.7	19.3	316.3	21 0.2	

Data dissemination cont..

Exports

cont'd

7.11 INTERNATIONAL TRADE IN SERVICES - EXPORT OF SERVICES
FJD [Millions]

Services	5 Construction services	6 Insurance and pension services	7 Financial services ^[d]	8 Charges for the use of intellectual property ^[e]	9 Telecom., computer and information services	10 Other business services	10.1 Research and development services	10.2 Professional and management consulting services ^[f]	10.3 Technical, trade-related and other business services ^[g]	11 Personal, cultural and recreational services ^[h]	12 Government goods and services n.i.e	Total Services
Yearly												
2010	0.0	0.0	1.0	1.0	18.6	37.3	0.0	19.9	17.4	2.4	124.6	1,891.4
2011	0.5	0.0	3.3	0.3	18.3	68.9	0.1	20.3	48.5	1.2	162.6	2,097.0
2012	0.1	0.0	6.7	0.1	36.4	57.8	0.3	13.9	43.6	1.6	195.2	2,188.4
2013	0.4	0.0	8.1	0.0	36.2	62.1	0.2	9.3	52.6	0.0	240.8	2,277.1
2014	0.0	0.0	11.6	0.9	35.5	47.9	0.1	9.6	38.2	0.3	221.9	2,517.9
2015	17.7	0.0	10.3	0.9	38.3	61.2	1.2	8.7	51.3	1.3	170.9	2,758.2
2016	29.8	0.0	10.6	1.9	47.2	48.1	0.0	8.6	39.5	0.0	184.6	2,888.9
2017 [p]	9.4	0.0	29.3	1.8	52.4	30.5	0.0	6.1	24.4	0.0	185.0	3,054.6
2018 [p]	4.4	0.0	10.9	1.8	62.2	47.3	0.0	12.2	35.1	0.0	247.4	3,466.8
2019 [p]	16.5	0.0	10.6	1.7	49.9	36.7	0.0	10.4	26.3	0.0	221.2	3,487.5
2020 [p]	6.1	0.0	5.6	0.3	31.8	35.7	0.0	8.6	27.1	0.0	154.5	906.3

Data dissemination cont..

Imports

INTERNATIONAL MERCHANDISE TRADE

7.12 INTERNATIONAL TRADE IN SERVICES - IMPORT OF SERVICES FJD [Millions]

Services	1 Manufacturing services on physical inputs owned by others ^[a]	2 Maintenance and repair services n.i.e. ^[b]	3 Transportation services	3.1 Sea transport				3.2 Air transport				3.3 Postal and courier services	4 Travel services	4.1 Business / Conference	4.2 Personal				4.3 Less Vat Refunded (TVRS) ^[c]
				3.1.1 Passenger	3.1.2 Freight	3.1.3 Other	Total	3.2.1 Passenger	3.2.2 Freight	3.2.3 Other	Total				4.2.1 Personal	4.2.2 Health related	4.2.3 Education related	Total	
Yearly																			
2010	0.0	0.2	512.9	0.0	320.1	0.0	320.1	26.4	35.5	129.1	191.0	1.8	167.6	7.0	141.1	7.0	12.5	160.6	0.0
2011	0.0	4.8	551.3	0.0	361.5	0.0	361.5	31.9	41.5	114.9	188.3	1.5	175.3	9.2	144.3	5.7	16.1	166.1	0.0
2012	0.0	7.1	581.8	0.0	372.3	0.0	372.3	33.3	57.3	116.5	207.1	2.4	163.6	8.0	124.7	14.8	16.1	155.6	0.0
2013	0.0	3.1	687.0	0.0	480.3	0.0	480.3	25.1	76.5	95.5	197.1	9.6	168.1	9.1	133.1	11.8	14.1	159.0	0.0
2014	0.0	5.7	657.1	0.0	463.1	0.0	463.1	19.4	67.9	99.6	186.9	7.1	167.3	8.4	130.5	10.7	17.7	158.9	0.0
2015	0.0	7.1	633.5	0.0	439.4	0.0	439.4	23.0	65.6	101.5	190.1	4.0	219.3	11.0	170.8	13.4	24.1	208.3	0.0
2016	0.0	7.7	634.6	0.0	445.4	0.0	445.4	21.3	63.9	100.7	185.9	3.3	227.9	12.0	188.0	9.7	18.2	215.9	0.0
2017 [p]	0.0	6.0	704.7	0.0	455.8	0.0	455.8	21.4	64.7	158.7	244.8	4.1	264.1	13.6	214.1	15.4	21.0	250.5	0.0
2018 [p]	0.0	10.2	806.8	0.0	526.4	0.0	526.4	23.6	80.7	173.9	278.2	2.2	311.0	16.4	255.1	17.5	22.0	294.6	0.0
2019 [p]	0.0	9.8	859.1	0.0	555.3	0.0	555.3	19.7	78.9	200.6	299.2	4.6	356.5	19.1	298.3	16.8	22.3	337.4	0.0
2020 [p][r]	0.0	5.4	482.6	0.0	346.8	0.0	346.8	3.8	29.8	101.3	134.9	0.9	156.9	7.6	119.3	12.8	17.2	149.3	0.0

Data dissemination cont..

Imports

cont'd

7.12 INTERNATIONAL TRADE IN SERVICES - IMPORT OF SERVICES
FJD [Millions]

Services	5 Construction services	6 Insurance and pension services	7 Financial services ^[d]	8 Charges for the use of intellectual property ^[e]	9 Telecom., computer and information services	10 Other business services	10.1 Research and development services	10.2 Professional and management consulting services ^[f]	10.3 Technical, trade-related and other business services ^[g]	11 Personal, cultural and recreational services ^[h]	12 Government goods and services n.i.e	Total Services
Yearly												
2010	0.0	56.8	0.8	1.7	39.9	65.2	0.0	24.6	40.6	3.9	10.3	859.3
2011	0.0	61.6	0.6	4.2	60.0	94.6	0.2	45.0	49.4	3.0	10.4	965.8
2012	0.0	70.6	0.5	4.6	86.1	88.0	0.4	53.4	34.2	2.6	23.1	1,028.0
2013	2.3	79.2	2.6	4.3	56.7	84.0	0.4	45.8	37.8	3.2	25.5	1,116.0
2014	2.9	78.6	3.4	6.0	99.1	82.9	1.3	55.7	25.9	7.5	28.8	1,139.3
2015	5.2	80.6	3.0	8.2	91.6	89.1	1.0	44.7	43.4	5.6	47.9	1,191.1
2016	6.4	78.8	2.5	12.5	72.2	120.7	2.6	56.0	62.1	6.2	33.9	1,203.4
2017 ^[p]	13.7	86.6	2.3	16.7	82.7	132.0	1.3	57.1	73.6	6.2	30.0	1,345.0
2018 ^[p]	27.6	104.6	2.8	14.0	74.1	141.9	1.3	64.0	76.6	10.1	29.7	1,532.8
2019 ^[p]	39.2	115.4	5.1	13.7	76.3	201.5	1.3	65.8	134.4	6.2	32.1	1,714.9
2020 ^{[p][r]}	19.5	91.7	16.4	12.8	67.6	184.5	0.9	32.2	151.4	5.1	29.3	1,071.8

Revision Policy

Do we revise ITSS?

Conclusion

Where to?

Continue doing estimates using OET/ITRS for BOP

Compile ITSS like Fiji does

If like Fiji then who does it –

Central Bank or NSO: Fiji/Vanuatu/Samoa

Resources?

Skills?

Who provides TA?

PICTs have small national statistics offices

Country NSO	No of staff in 2019
American Samoa	7
Cook Islands	10
FSM	21
Fiji	146
Guam	30
Kiribati	14
RMI	5
PNG	134
Nauru	5
Niue	4
CNMI	6
Samoa	87
Tuvalu	4
Vanuatu	52

Thank You!

shutterstock.com · 1153770891